

Smoke Density Monitor application documentation

Navigating the User interface

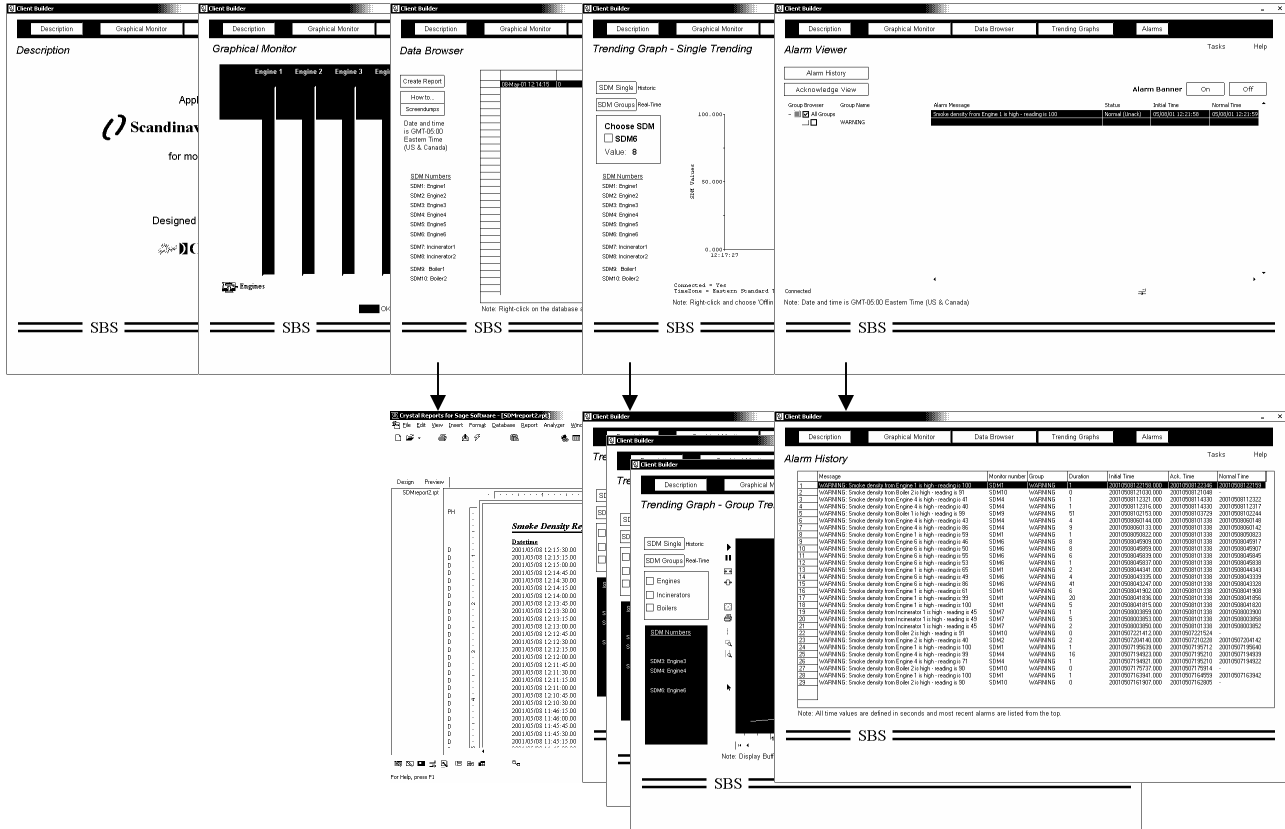


Fig. 1 Screen shot of the application layout.

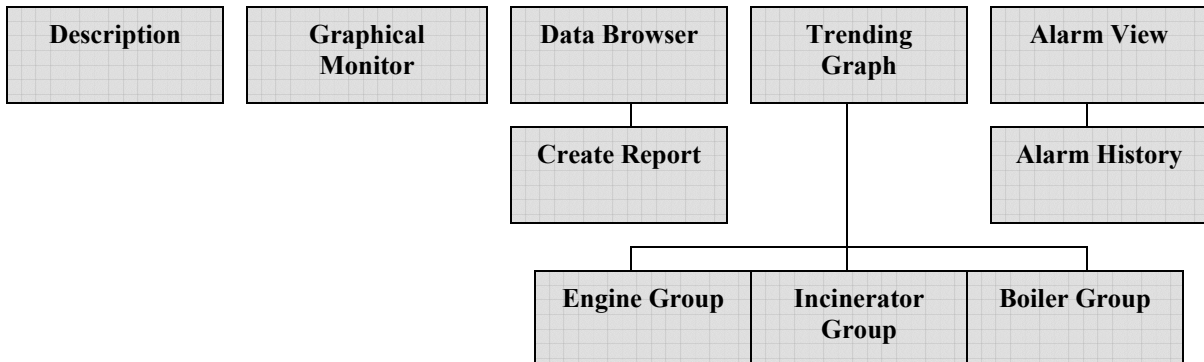


Fig. 2 Diagram of the application layout.

Description
Graphical Monitor
Data Browser
Trending Graphs
Alarms
Sat: 04/26/2003 19:29:52

Description Help 



Application developed by
Scandinavian Boiler Service, Inc.
 for monitoring smoke density.
 Designed for the SDM installation on




M/V Vision of the Seas

GPS Information			
Latitude	Course	000	
Longitude	Speed	00.0	

Current Position N W

Documents of interest

User Manual

Calibrating the SDM

No Keyboard/ Mouse

World Map of Time Zones



Description

This system was developed by Scandinavian Boiler Service (SBS) in order to monitor and document the amount of smoke produced.

The system is a stand-alone solution - it consists of a number of Density Monitor (SDM) devices, a junction box connecting the SDM's, a PLC box connected to the junction box, and finally the PC connects to the PLC in order to read its data.

The button **“User Manual”** will bring up the user manual for the SDM software application.

The button **“Calibrating the SDM”** will bring up a short description on how to calibrate the SDM circuit from the monitor boxes.

“No Keyboard/ Mouse” tell you how to work with the touch screen computer, when no mouse and keyboard is attached.

“World Map of Time Zones” is the world mapped out with the different time zones – The SDM system operates in GMT time zone. In order to calculate current or past standard time, use this map and the logged GPS longitude and latitude as a rough estimate. A precise time zone has to be calculated from separate GPS software or web service not included in this SDM system.

Following screen shots are from earlier installations and may not reflect exactly this ship's SDM configuration, but described functionality will still be the same and can be used accordingly.

Description
Graphical Monitor
Data Browser
Trending Graphs
Alarms
Sun 04/13/2003 15:21:37

Data Browser Help

Create Report

How to...

Note: Date and time is (GMT) Greenwich Meantime: Dublin, London...(Click for Time Zone map)

SDM Numbers

SDM1: Engine1
SDM2: Engine2
SDM3: Engine3
SDM4: Engine4
SDM5: Auxiliary1
SDM6: Auxiliary2
SDM7: Auxiliary3
SDM8: Boiler 1
SDM9: Boiler 2
SDM9: Incinerator

	Datetime	SDM1	SDM2	SDM3	SDM4	SDM5	SDM6	SDM7	SDM8	SDM9	SD
861	4/12/2003 4:29:30 PM	0	0	0	45	0	0	0	0	0	
862	4/12/2003 4:29:15 PM	0	0	0	45	0	0	0	0	0	
863	4/12/2003 4:29:00 PM	0	0	0	45	0	0	0	0	0	
864	4/12/2003 4:28:45 PM	0	0	0	45	0	0	0	0	0	
865	4/12/2003 4:28:30 PM	0	0	0	45	0	0	0	0	0	
866	4/12/2003 4:28:15 PM	0	0	0	45	0	0	0	0	0	
867	4/12/2003 4:28:00 PM	0	0	0	45	0	0	0	0	0	
868	4/12/2003 4:27:45 PM	0	0	0	45	0	0	0	0	0	
869	4/12/2003 4:27:30 PM	0	0	0	45	0	0	0	0	0	
870	4/12/2003 4:27:15 PM	0	0	0	45	0	0	0	0	0	
871	4/12/2003 4:27:00 PM	0	0	0	45	0	0	0	0	0	
872	4/12/2003 4:26:45 PM	0	0	0	45	0	0	0	0	0	
873	4/12/2003 4:26:30 PM	0	0	0	45	0	0	0	0	0	
874	4/12/2003 4:26:15 PM	0	0	0	45	0	0	0	0	0	
875	4/12/2003 4:26:00 PM	0	0	0	45	0	0	0	0	0	
876	4/12/2003 4:25:45 PM	0	0	0	45	0	0	0	0	0	
877	4/12/2003 4:25:30 PM	0	0	0	45	0	0	0	0	0	
878	4/12/2003 4:25:15 PM	0	0	0	45	0	0	0	0	0	
879	4/12/2003 4:25:00 PM	0	0	0	45	0	0	0	0	0	
880	4/12/2003 4:24:45 PM	0	0	0	45	0	0	0	0	0	
881	4/12/2003 4:24:30 PM	0	0	0	45	0	0	0	0	0	

Browsing: SMOKEMONITOR@SDMmonitor
Connected:FLDataServer.DataServer@Local

Note: Right-click on the database and choose 'Refresh' for an updated view.

Current Position
N
W

Data Browser

This is a view into the data logged into the database - the 1000 most current reading from the top.

Every 15 second the readings are logged and stored into the database for 700 days.

Possible user interactions are database browsing and report creation.

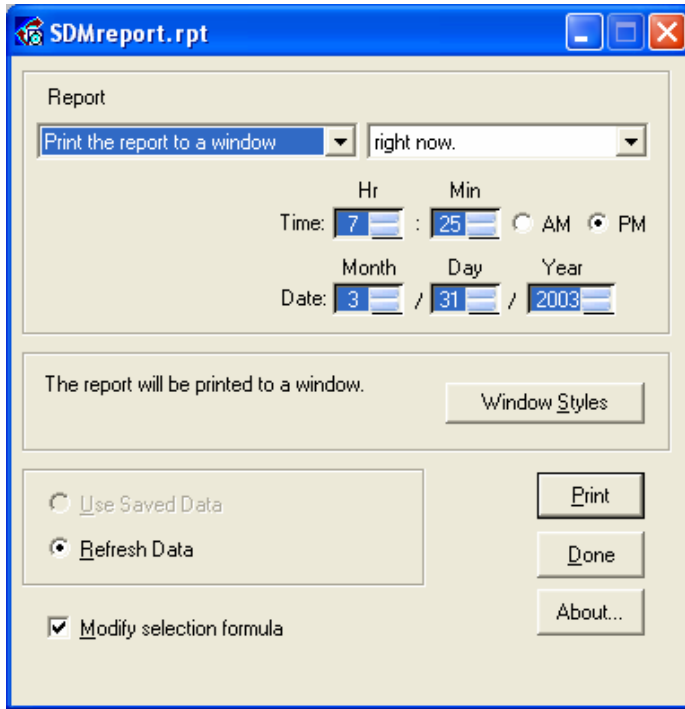
The database view can be 'refreshed' by right clicking.

“Time Zone Map” described on page 2 can be viewed by clicking the GMT notification.

Further information about creating reports please refer to the separate 'How To...' help file. (Inserted into this document below)

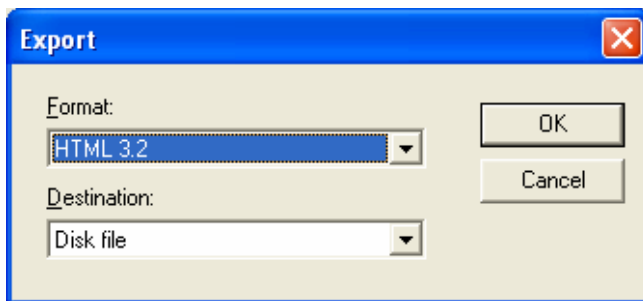
Creating the SDM Report

Press the '**Create Report**' button from within the Data Browser Page - This will launch the Crystal Reporting software.

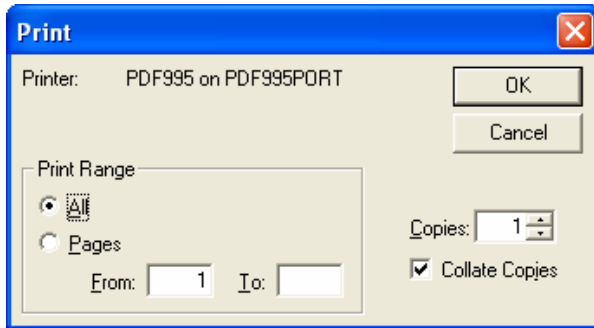


This window lets you specify your Report format – most of the time you will not have to do anything, but hitting the **PRINT** button to put the report to your screen. From here you will be able to both Export and Print, if you have selected the buttons in the **Windows Styles** options.

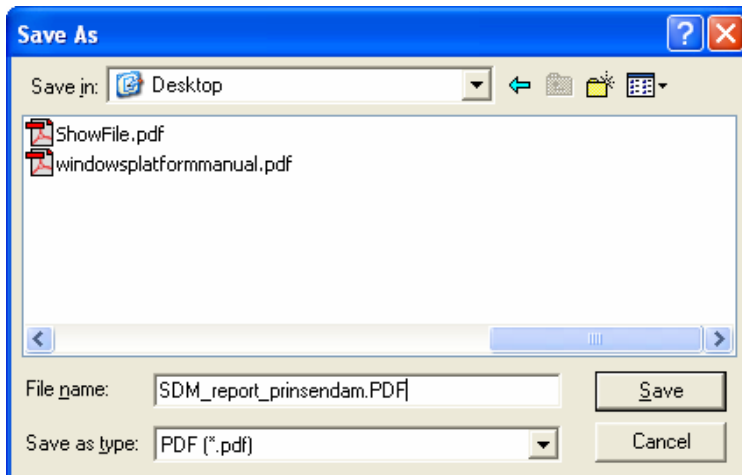
Though in some cases, you may want to *Export* your report out to another format. The situation might be the central office asking for a report in an electronically matter (on a file) - so you can choose to export the report in an Excel spreadsheet or as shown below a HTML file readable in any internet browser.



***** NOTE:** To create a report in a *PDF format* you need to print to the PDF995 printer. Recommended approach is to print the report to a window (described below) – and from here hit the printer icon, which brings up the Print dialog – from here you can choose to print all or only some pages.

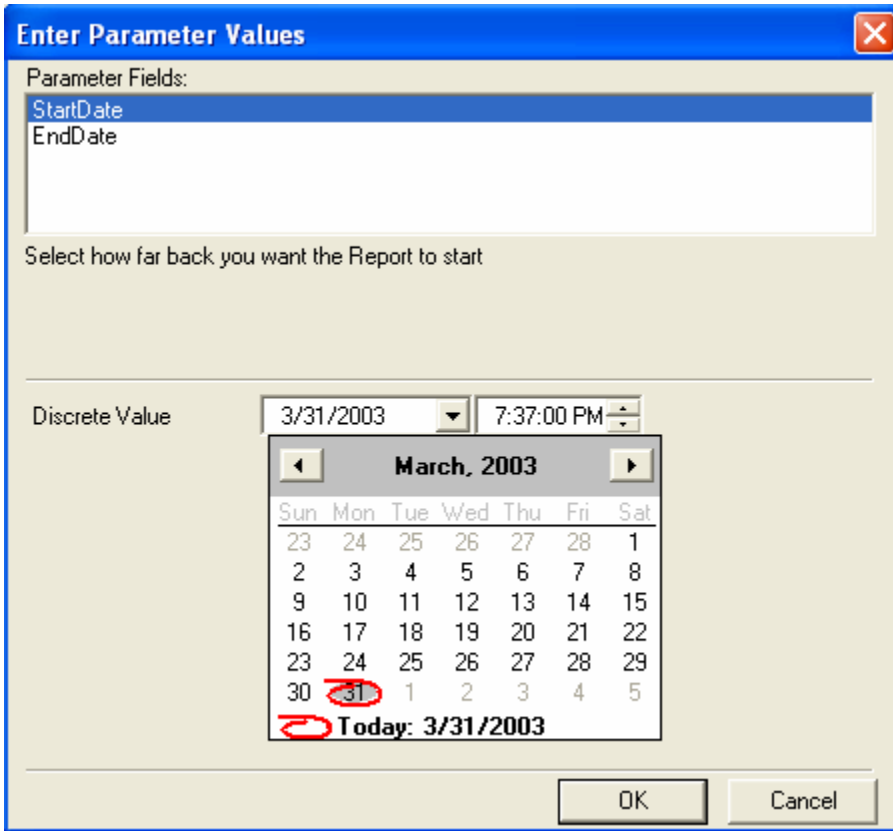


Hit OK to fetch the records.



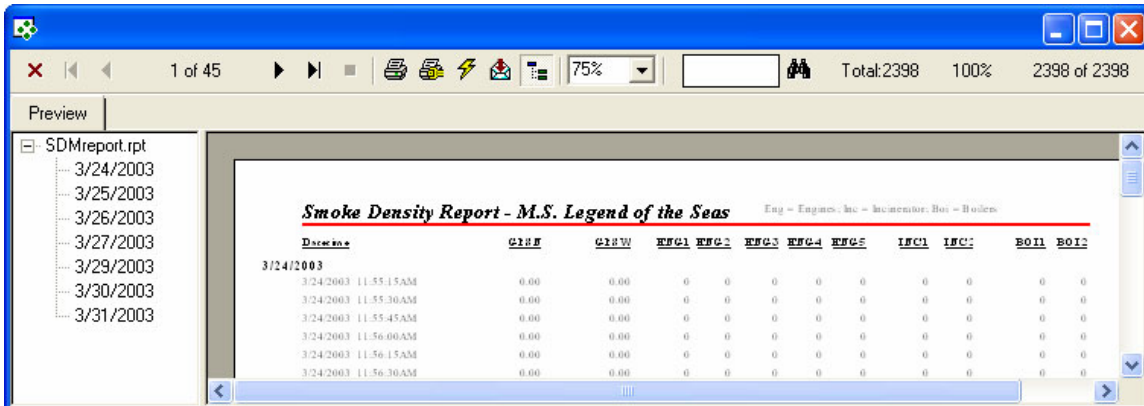
Save the PDF file to a location, where you can find it afterwards – either on the desktop or directly to the floppy disk drive located on the right side of the panel pc.

Another option is to *Schedule the Print job* to start at another time – useable if it is a big report, which takes a long time to process and print.



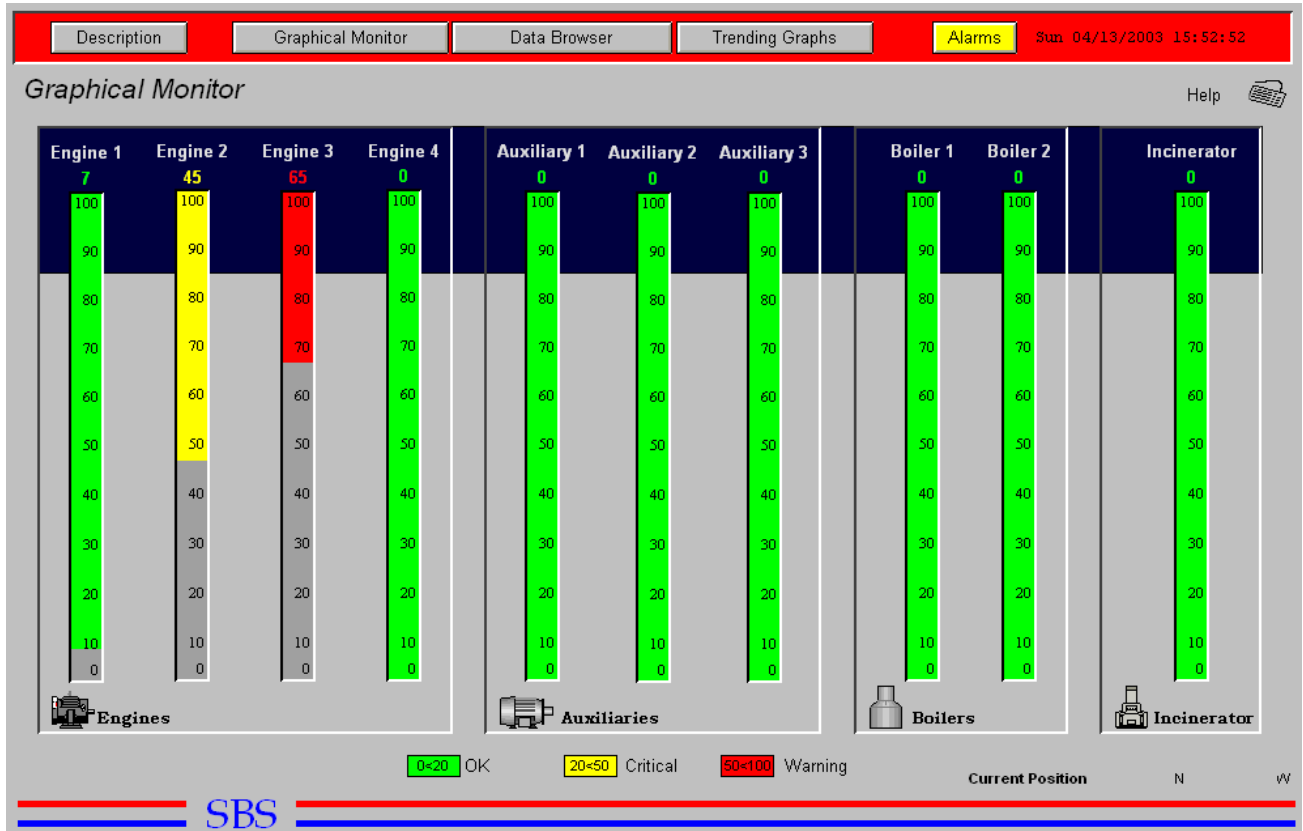
The Parameter window lets you specify from what date and time you want the report to **Start** and when the report should **End**. Remember to highlight and specify both the *StartDate* and *EndDate* parameters.

Hit **OK**



The report will be created – in this example 45 pages were created. You can go through the pages either by clicking or click the date on the left drill down panel. From here you can type in the hour you are interested in and find the timeframe of your interest.

Hit Print or Export if desired, otherwise to exit the report and afterwards the **Done** button.



Graphical Monitor

An overview of the current amount of smoke produced, gathering all Smoke Density Monitors(SDM) in the same screen.

The bar graphs has been grouped into 3 categories reflecting each system they monitor.

Depending on the SDM readings, the bar graphs will change its colors from green (OK), to yellow (Critical) and finally red (Warning).

The settings for each category can be changed, but the default limit settings are as follows:

0 -20 OK

20-50 Critical

50-100 Warning

Each time a 'Warning' is triggered, time, duration and values will be logged in the 'Alarm' screen.

No user interaction possible in this screen.

Each time a 'Warning' is triggered, time, duration and values will be logged in the 'Alarm' screen.

No user interaction possible in this screen.

Trending Graphs in general

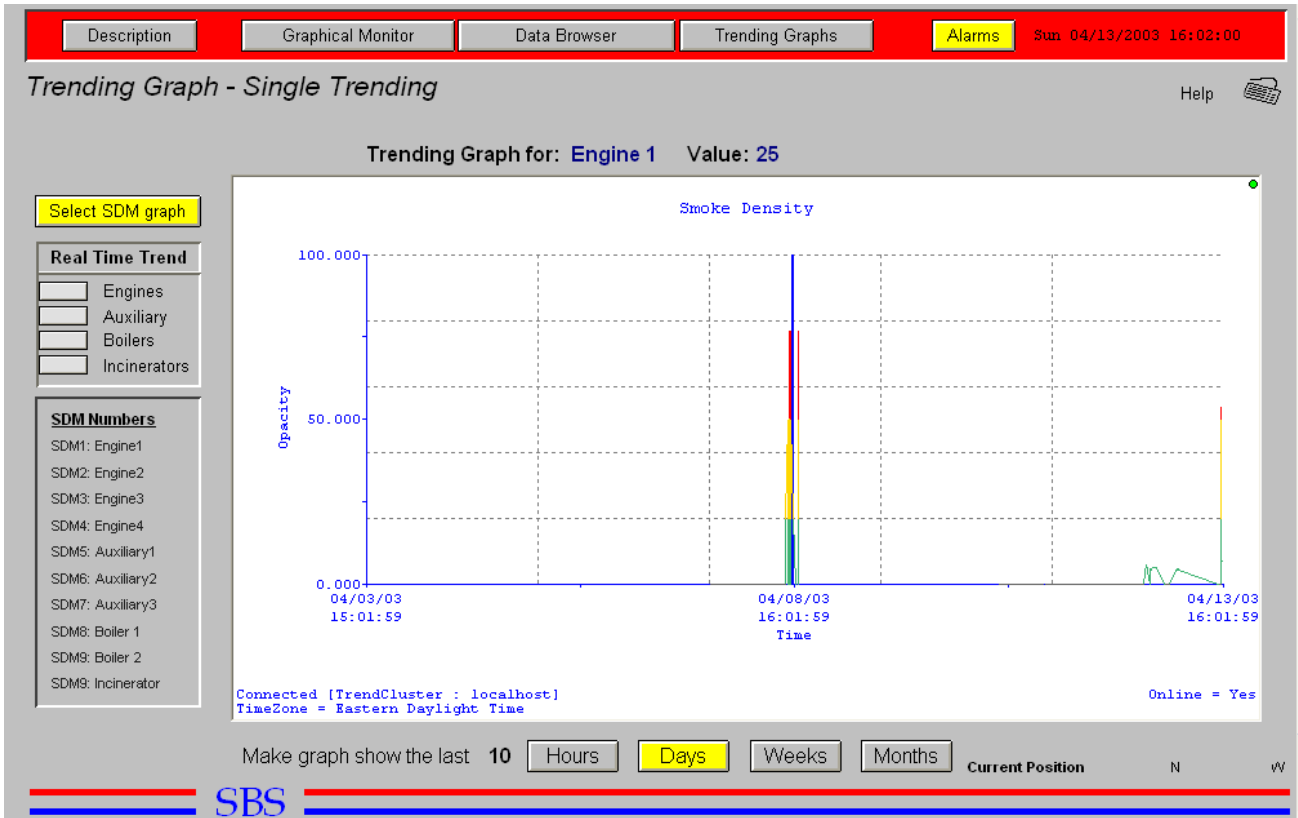
These graphs can be used to compare SDM values through out a certain time frame. In this way one would be able to tell the tendencies of the amount of smoke produced - is it increasing or decreasing?

Trending in this application has been divided into 2 categories. How big a time frame one wants to evaluate decides which of the 2 categories one should choose.

SDM Single: Generates a single graph out of the data logged into database on disk, which is why this one is referred to as Historic trending. For as long time the application has been logging data, one would be able to generate a graph on each single monitor with data 15 seconds from each other.

SDM Groups: Generates multiple graphs out of the real-time data acquired directly from the computers memory, which is why this one is referred to as Real-Time trending. From 1 hour as of the application has been started and real time trending has been activated, one would be able to generate a graph on each group category with data 1 second from each other.

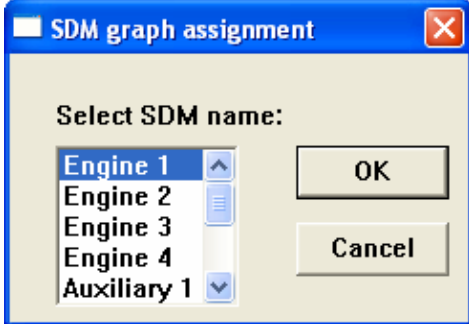
History in real time trending has been limited to 1 hour, because historic data is written to memory (RAM) and not to disk. Depending on how much RAM this system has got, this could be adjusted from minutes to days or even weeks.



SDM Single

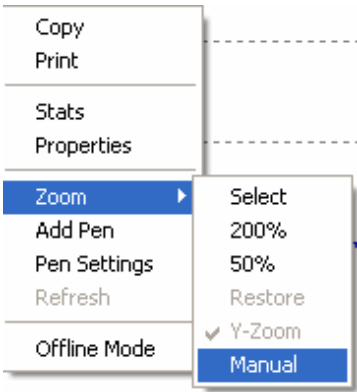
The possible user interactions on this page are shifting between each smoke density monitor (SDM).

Hitting the “Select SDM graph” brings up a dialog window, prompting you to chose which SDM you want to see the trend graph from.

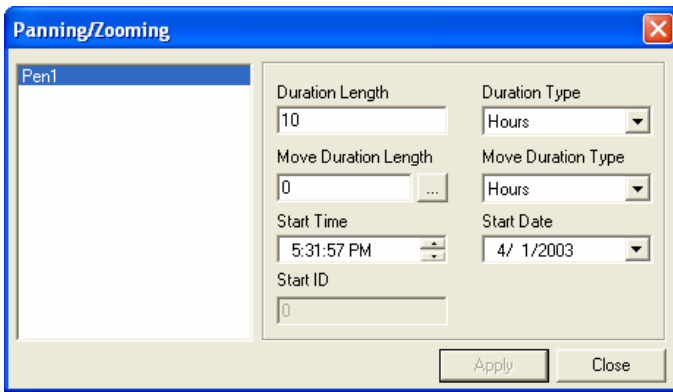


You can place the blue cursor wherever on the graph to show the actual value above the graph, or read the value and timestamp from the mouse cursor’s pop-up window.

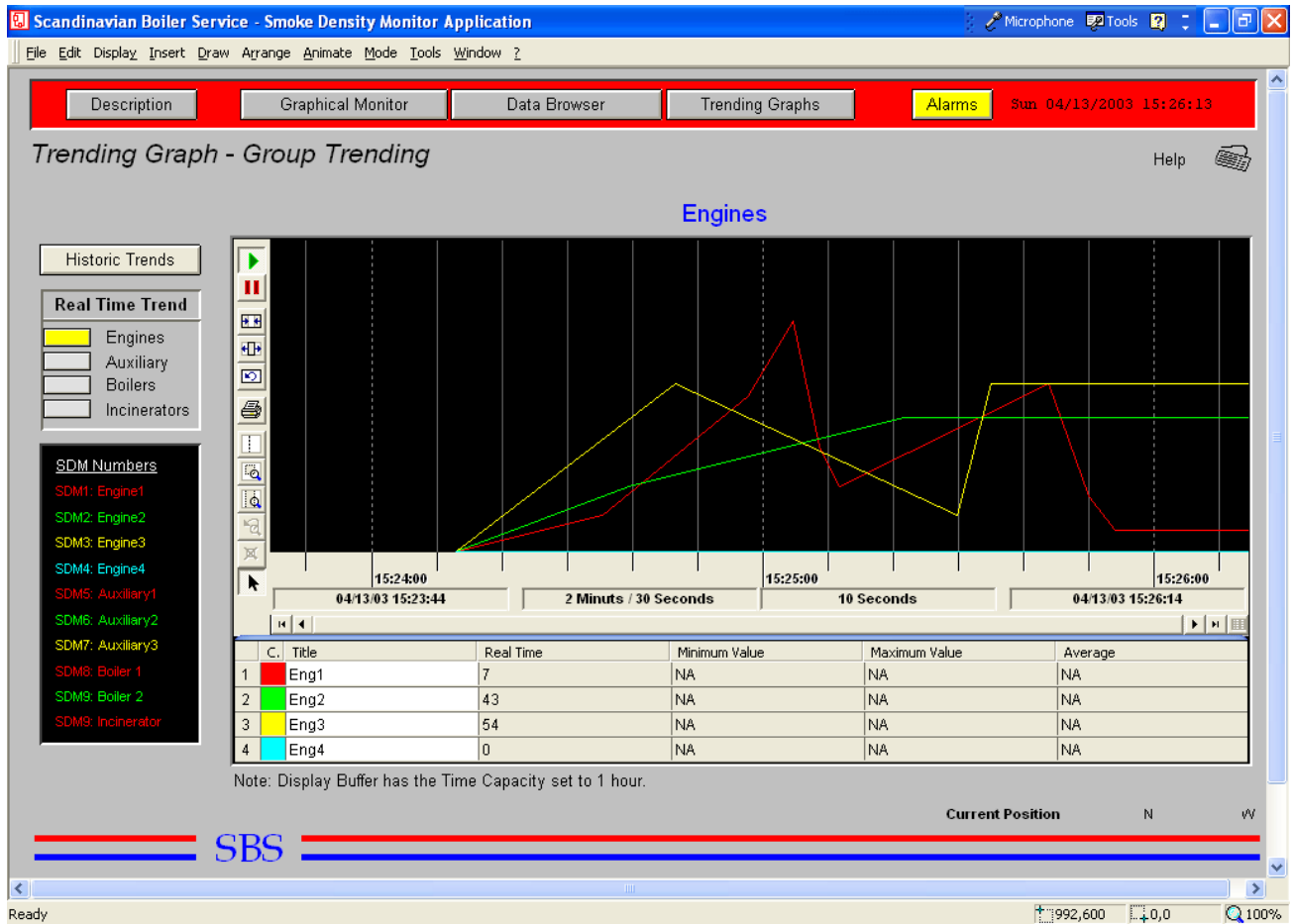
To change the viewing duration to 10 Days, Weeks, Months simply click the buttons beneath the graph.



Another method which will let you manually select the timeframe to look at is choosing 'Zoom' and the 'Manual'



This will bring your graph into 'Offline Mode' – so remember to bring it back Online when done and choose Zoom/ Restore to get the original view back.



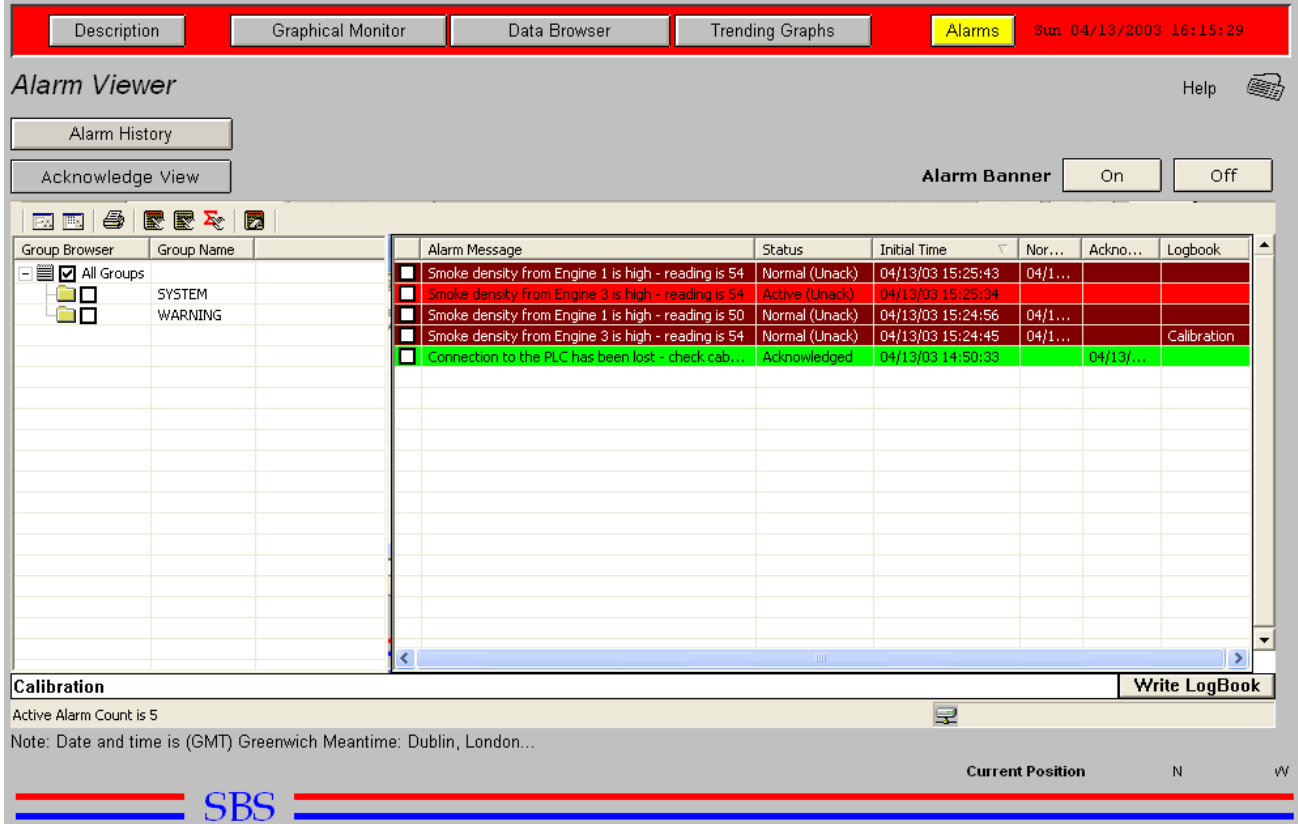
SDM Groups

Group Trending gathers multiple graphs for each system category.

Trending in general and the differences between historic and real time trending has been described in the help file on 'SDM Single' screen - please refer to this for elaboration on these subjects.

Possible user interactions on this screen are defined by the buttons in the graph. 'Start', 'Stop' is self explanatory. **NOTE:** Pulling the scroll line below the graph makes the graph to slow running – remember to hit the Start button when you are done scrolling. 'Implode', 'Explode' makes the view bigger, so one can see the entire hour or just a few seconds in 1 graph. 'Restore' sets the graph back to its default settings.

'Print' of course prints the graph. 'Coursner Mode' and 'Zoom by Area' / '...Time' are for getting a more fine grained view of the graphs behavior. 'Cancel All Zoom' reset the graphs default settings.



Alarm Viewer

Only 'Warnings' and 'System' conditions are creating an alarm.

When the smoke density exceeds 50, an alarm is triggered. A small message, alarm status, what time it occurred, when the value got back to normal and when the alarm was acknowledged by the user is logged into the alarm database.

An alarm is indicated by the 'Alarm' button turning yellow, plus the user has the opportunity to toggle an 'Alarm Banner' in the bottom of each page, showing the most recent active alarm. So no matter what screen the user is on, an alarm would be visually indicated.

The user has different options on how to Acknowledge the alarms - these are selectable through the Menu line on the top left.

The options are:

- Configuration Filter: Filter which alarms to see.
- Multiselect Alarms: Select alarms in separate window
- Print: Print alarms
- Acknowledge Selected: Ack. checked alarms.
- Acknowledge Page: Acknowledge alarms on the page
- Acknowledge All: Acknowledge all active alarms

Write LogBook (In lower right corner)

- Attach a comment to any of the alarms to store in the logbook. Type your comment in the text field and hit the Write button.

Description
Graphical Monitor
Data Browser
Trending Graphs
Alarms
Sun 04/13/2003 16:18:02

Alarm History Help

	msg	name	itime	ntime	dur
1	WARNING: Smoke density from Engine 2 is high - reading is 98	SDM2	04/09/2003 11:10:11	-	0
2	WARNING: Smoke density from Engine 3 is high - reading is 100	SDM3	04/09/2003 11:10:11	-	0
3	WARNING: Smoke density from Engine 4 is high - reading is 100	SDM4	04/09/2003 11:10:11	-	0
4	WARNING: Smoke density from Engine 5 is high - reading is 100	SDM5	04/09/2003 11:10:11	-	0
5	WARNING: Smoke density from Incinerator 1 is high - reading is 100	SDM6	04/09/2003 11:10:11	-	0
6	WARNING: Smoke density from Incinerator 2 is high - reading is 100	SDM7	04/09/2003 11:10:11	-	0
7	WARNING: Smoke density from Boiler 1 is high - reading is 100	SDM8	04/09/2003 11:10:11	-	0
8	WARNING: Smoke density from Boiler 2 is high - reading is 100	SDM9	04/09/2003 11:10:11	-	0
9	WARNING: Smoke density from Engine 1 is high - reading is 77	SDM1	04/09/2003 11:13:56	04/09/2003 11:13:56	0
10	WARNING: Smoke density from Engine 1 is high - reading is 77	SDM1	04/09/2003 11:15:36	04/09/2003 11:15:36	0
11	WARNING: Smoke density from Engine 1 is high - reading is 58	SDM1	04/09/2003 11:15:37	04/09/2003 11:15:38	1
12	WARNING: Smoke density from Engine 1 is high - reading is 77	SDM1	04/09/2003 11:15:39	04/09/2003 11:15:40	1
13	WARNING: Smoke density from Engine 1 is high - reading is 73	SDM1	04/09/2003 11:15:41	04/09/2003 11:15:42	1
14	WARNING: Smoke density from Engine 1 is high - reading is 77	SDM1	04/09/2003 11:16:17	04/09/2003 11:16:17	0
15	SYSTEM: Connection to the PLC has been lost - check cabling and r	MBUSTCP_:	04/11/2003 14:04:45	-	0
16	SYSTEM: Connection to the PLC has been lost - check cabling and r	MBUSTCP_:	04/12/2003 15:57:46	-	0
17	SYSTEM: Connection to the PLC has been lost - check cabling and r	MBUSTCP_:	04/12/2003 19:29:31	-	0
18	SYSTEM: Connection to the PLC has been lost - check cabling and r	MBUSTCP_:	04/12/2003 19:51:20	-	0
19	SYSTEM: Connection to the PLC has been lost - check cabling and r	MBUSTCP_:	04/12/2003 23:50:33	-	0
20	SYSTEM: Connection to the PLC has been lost - check cabling and r	MBUSTCP_:	04/13/2003 14:50:33	-	0
21	WARNING: Smoke density from Engine 3 is high - reading is 54	SDM3	04/13/2003 15:24:45	04/13/2003 15:25:29	44
22	WARNING: Smoke density from Engine 1 is high - reading is 50	SDM1	04/13/2003 15:24:56	04/13/2003 15:25:07	11

Browsing: ALARMS@SDMmonitor
Connected:FLDataServer.DataServer@Local

Note: All time values are defined in seconds and most recent alarms are listed from the top.

Current Position N vW

Alarm Viewer History

The Alarm History page is a look into the alarm database, so one is able to see what alarms has been acknowledged in the past.

Initial time is when the alarm was triggered and *Normal time* is when the reading went back to un-warning condition (below 50) – finally the *Duration*, telling you how many seconds the reading was above 50.